



INRCOG

Iowa Northland Regional
Council of Governments

Redesigning an MPO Bikeway Plan

Codie Leseman, Transportation Planner

INRCOG | PARTNERS FOR PROGRESS

Developing Strong Local Government through Regional Cooperation

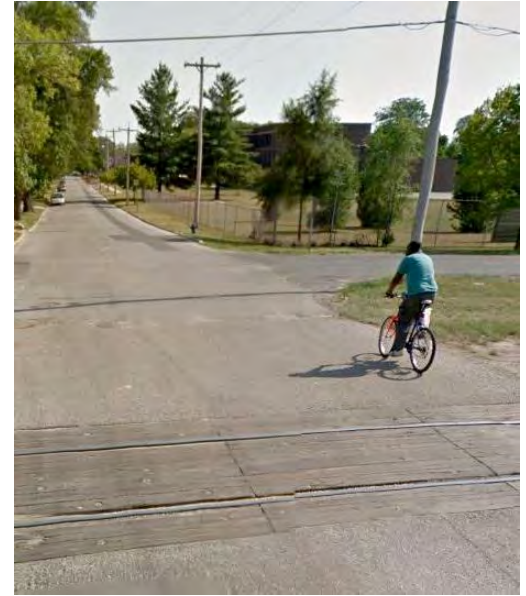
229 E Park Avenue | Waterloo Iowa 50703 | P (319) 235-0311 | F (319) 235-2891 | www.inrcog.org

What is a bikeway?



INRCOG
Iowa Northland Regional
Council of Governments

What is a bikeway?



INRCOG
Iowa Northland Regional
Council of Governments

Bicycle Friendly Communities

- San Francisco, CA
- Palo Alto, CA
- Menlo Park, CA
- Stanford University



INRCOG
Iowa Northland Regional
Council of Governments

Bicycle Friendly Communities

- San Francisco, CA
- Palo Alto, CA
- Menlo Park, CA
- Stanford University



INRCOG
Iowa Northland Regional
Council of Governments

Bicycle Friendly Communities

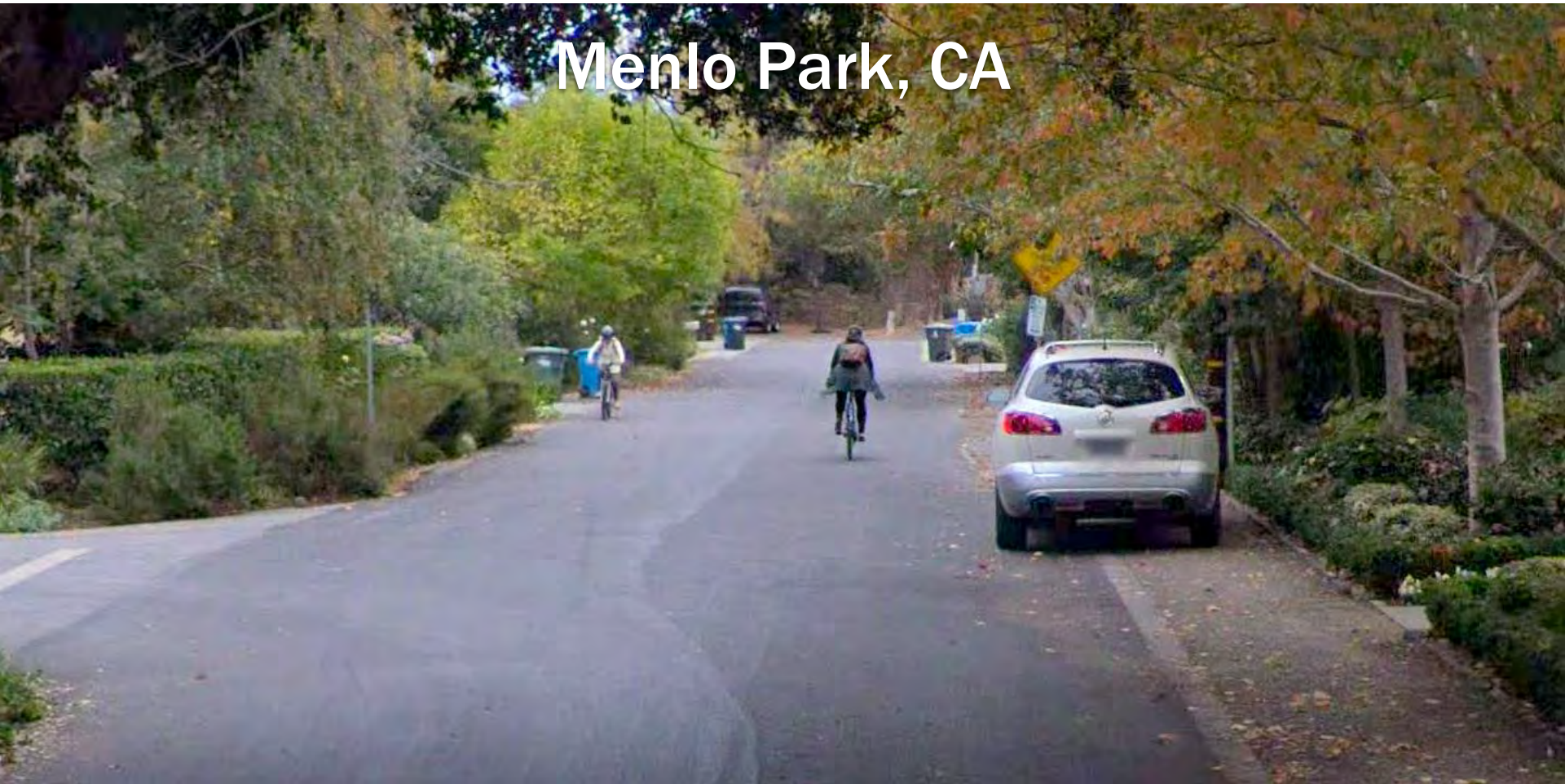


INRCOG
Iowa Northland Regional
Council of Governments

San Francisco, CA



Menlo Park, CA



Palo Alto, CA



Stanford University



© 2011 Google

© 2011 Google



Bicycle Friendly Communities

- Understated
- Integrated with traffic
 - Driving lanes are narrower too
- Mix of treatments, but continuous
- “Normal”



Applying these principles



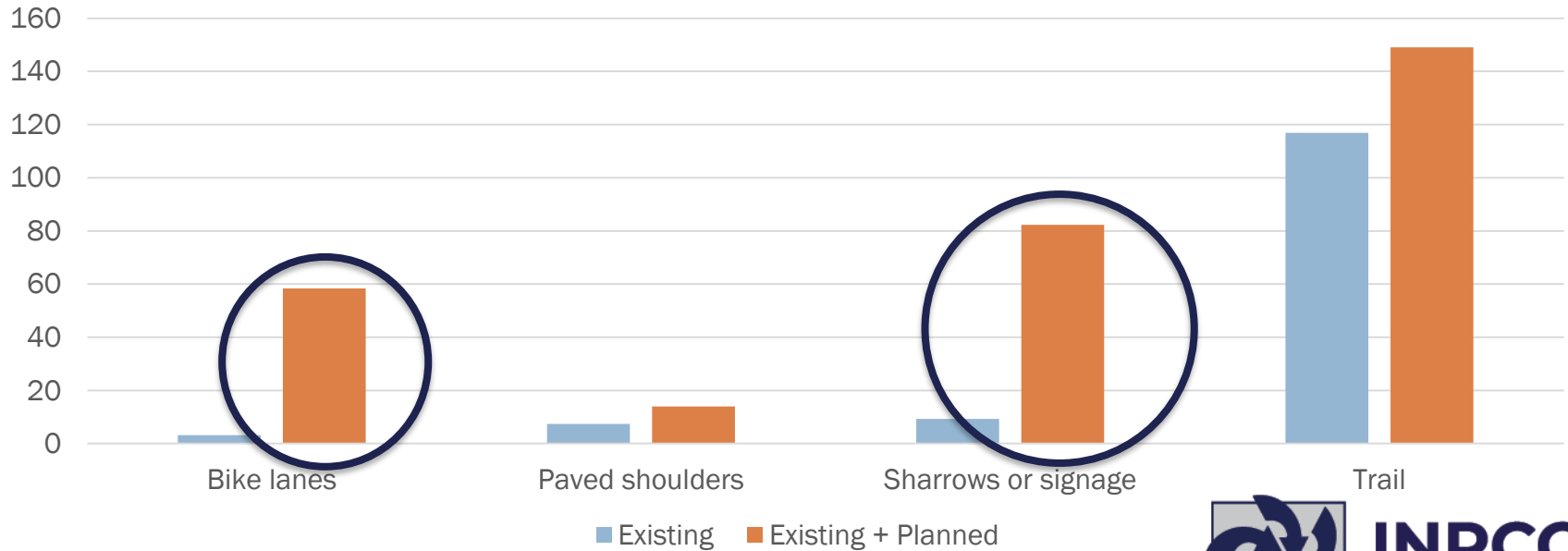
Low volume thru streets



Road diets where there's extra capacity

Applying these principles

Planned bicycle facilities by type



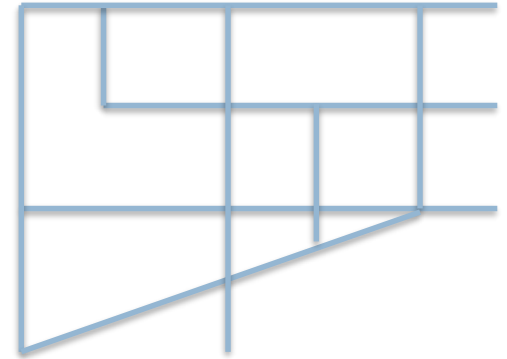
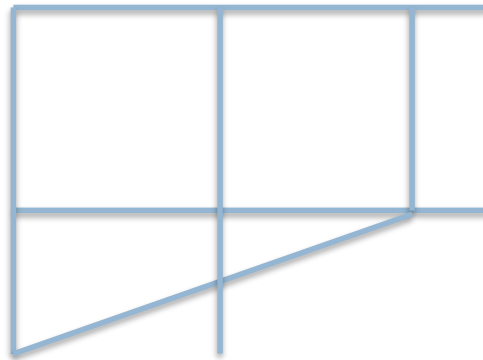
Building a bikeway network

- Goal: Plan a “gold standard” bikeway network for the Waterloo-Cedar Falls area
- Goal: Use best practices from NACTO, etc. to determine feasible treatments



Building a bikeway network

1.) Consider coverage desired



Building a bikeway network

2.) Classify the bikeway types

-  Buffered Bike Lanes
-  Bike Lanes
-  Paved Shoulders
-  Sharrows
-  Planned Signed Bike Route
-  Trail
-  On-Road Path



Building a bikeway network

2.) Classify the bikeway types

-  Buffered Bike Lanes
-  Bike Lanes
-  Paved Shoulders
-  One-Way Bike Lane
-  Uphill Bike Lane, Downhill Sharrows
-  Sharrows
-  Planned Signed Bike Route
-  Trail
-  On-Road Path



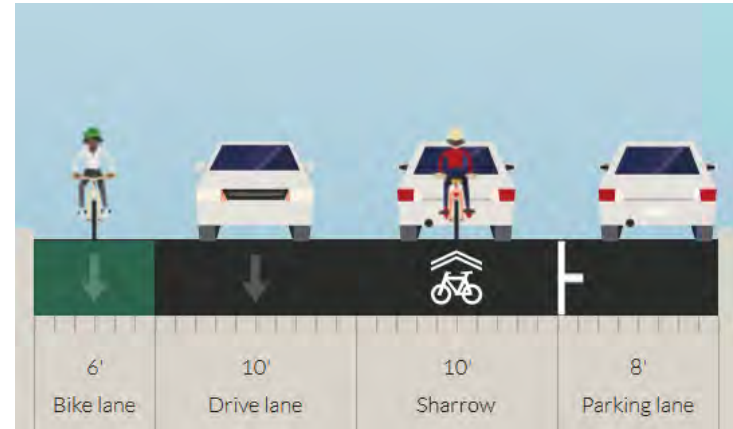
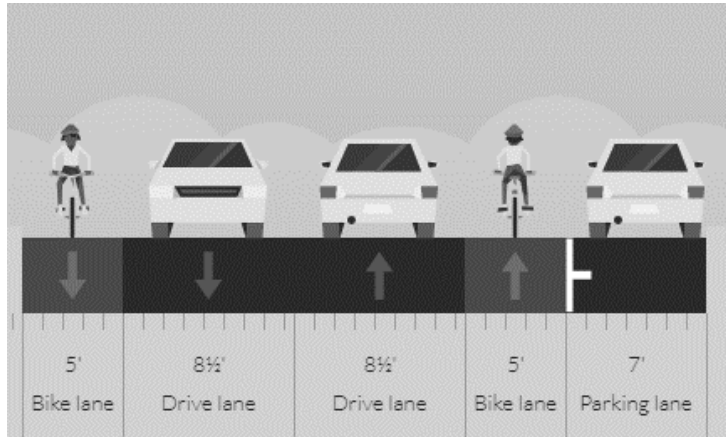
Building a bikeway network

3.) Make it's feasible



Building a bikeway network

3.) Make sure it's feasible

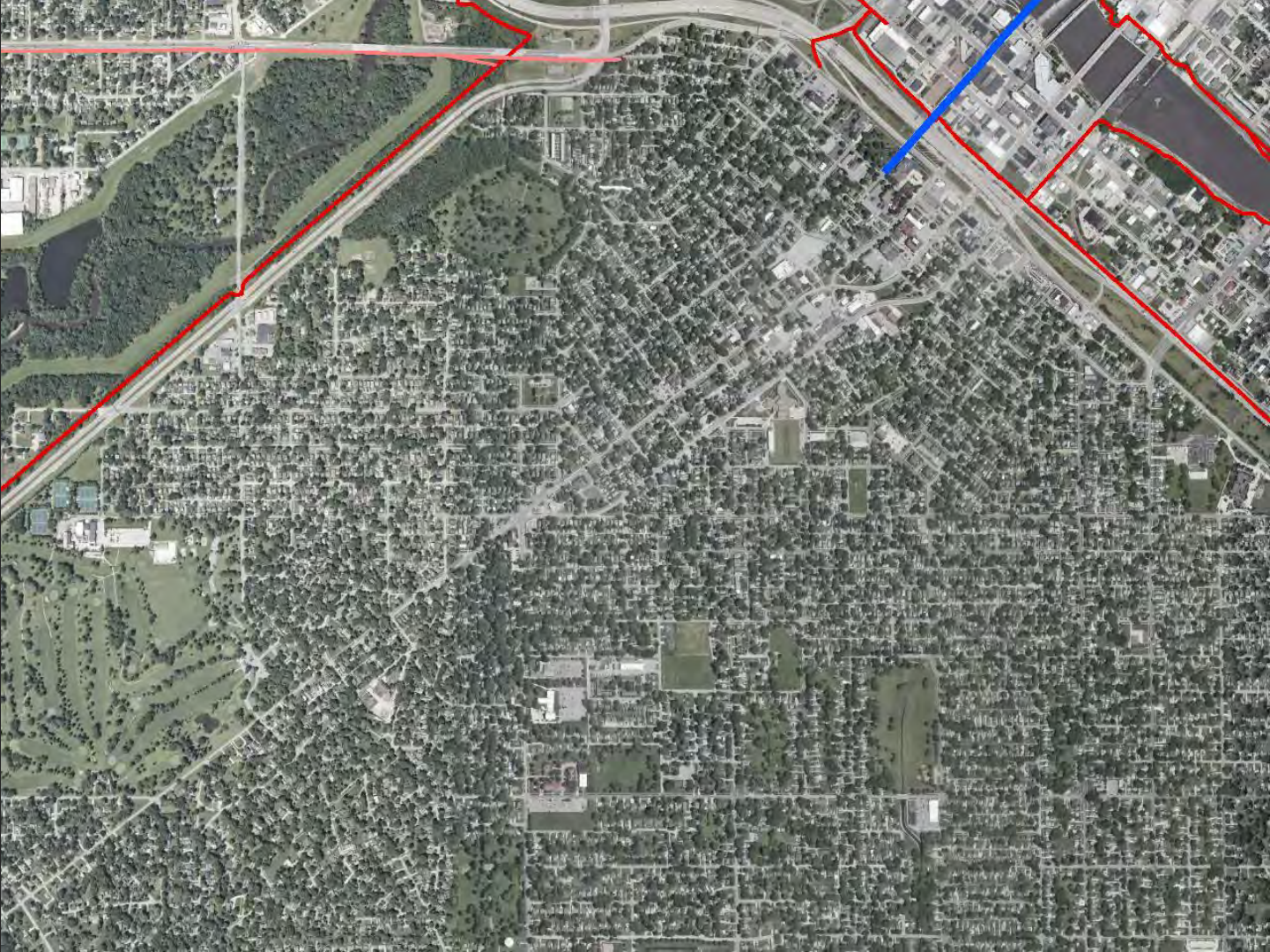


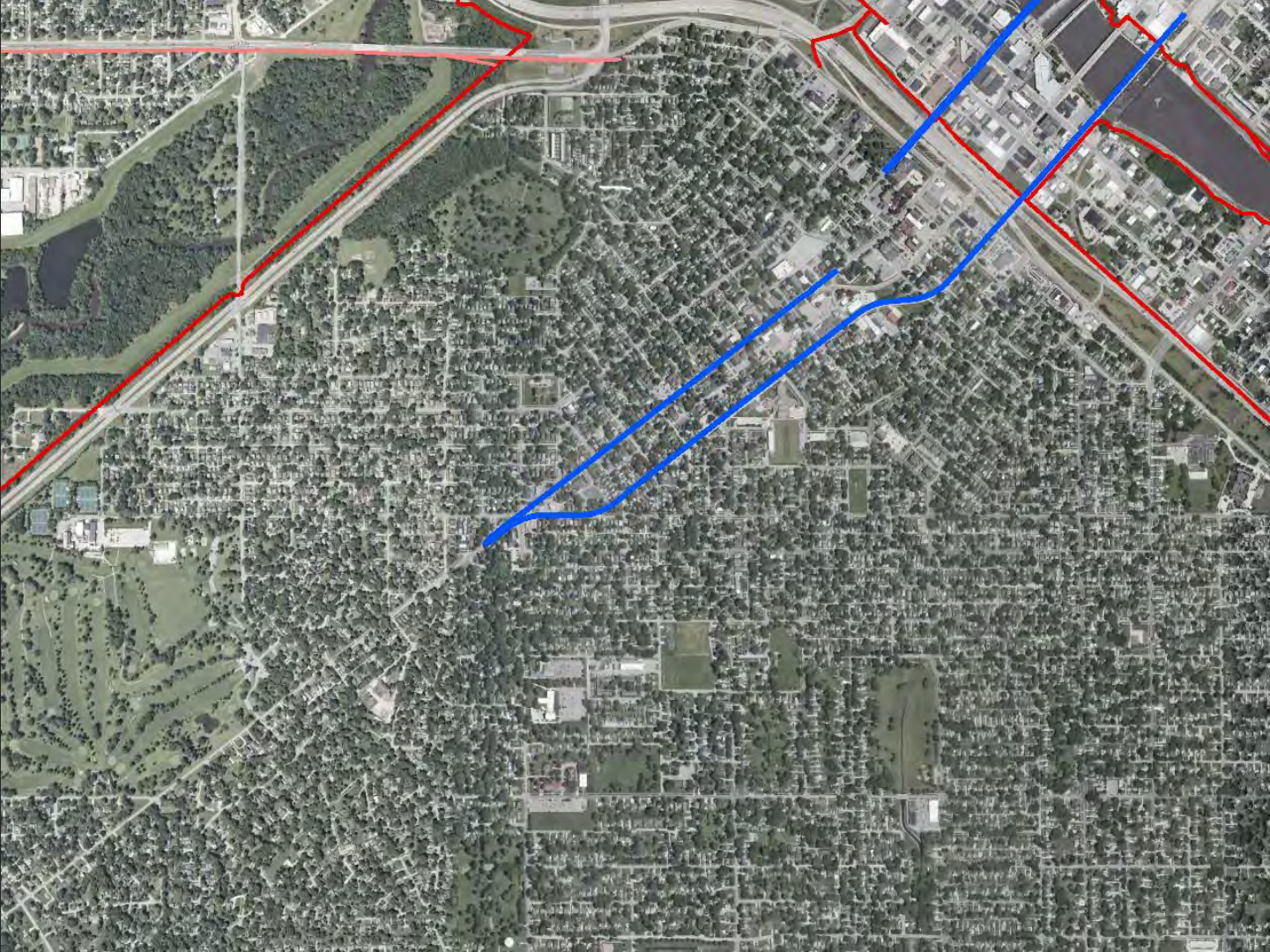
Building a bikeway network

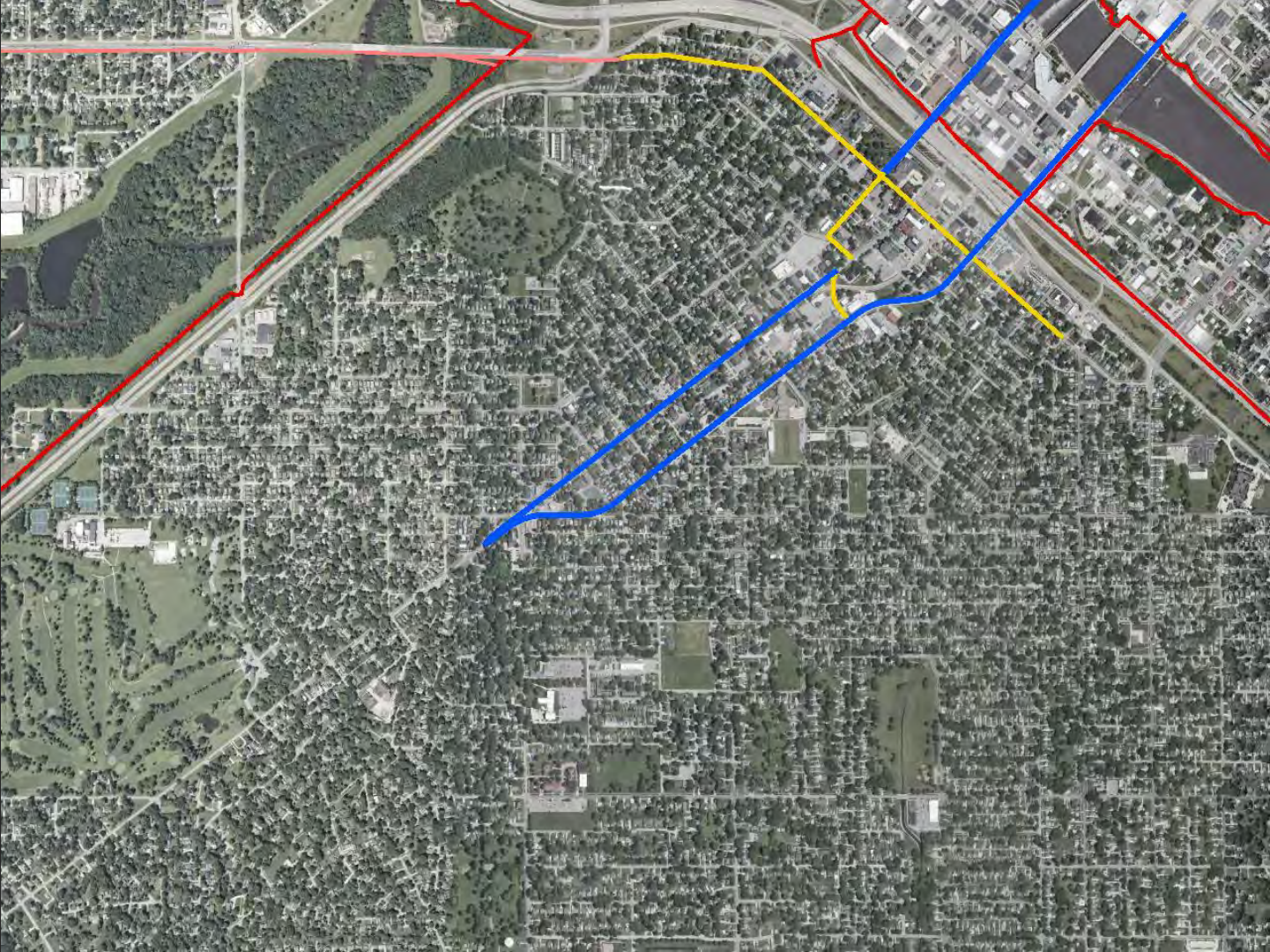
4.) Start “building” with easiest cases first

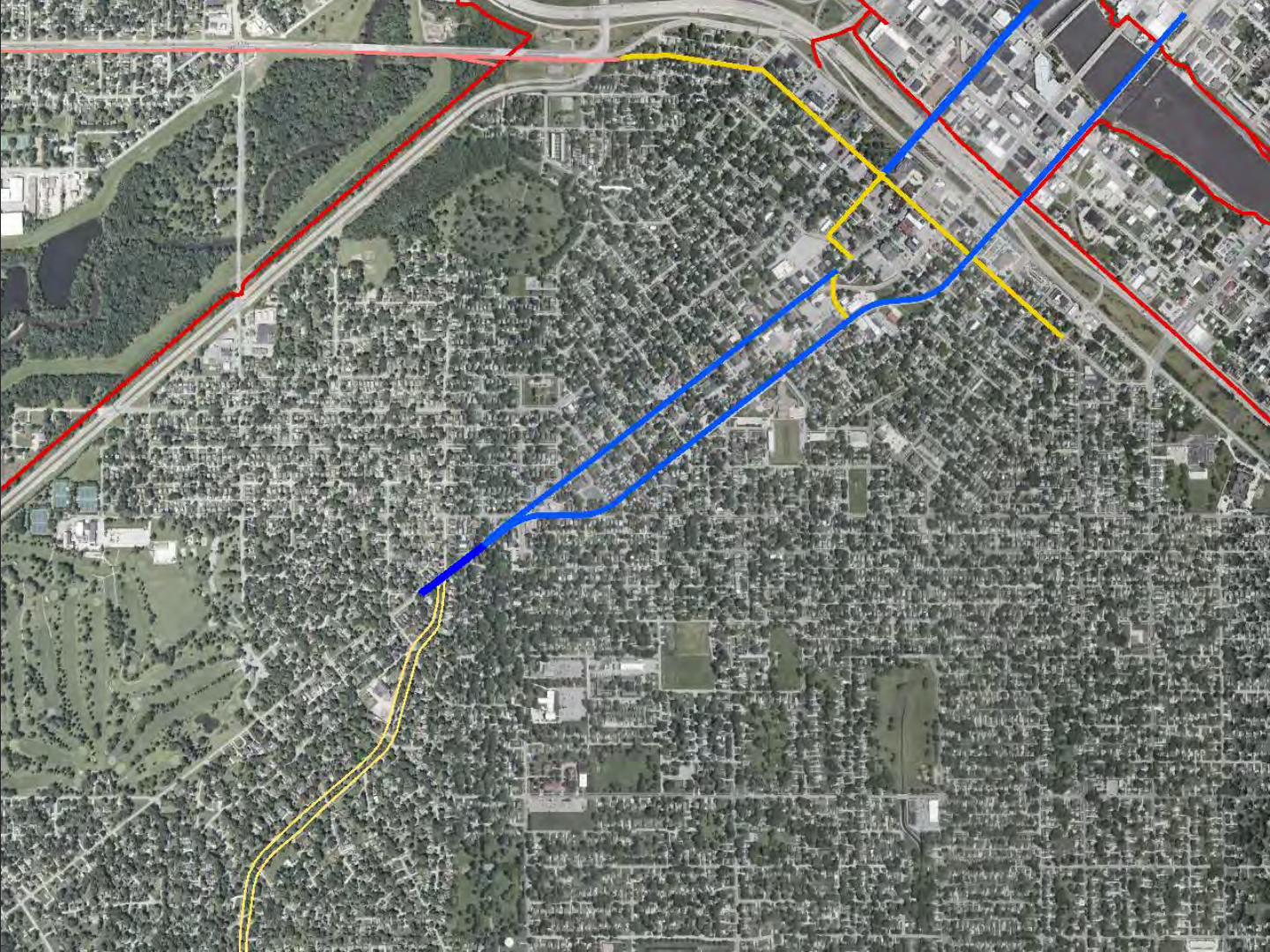


INRCOG
Iowa Northland Regional
Council of Governments

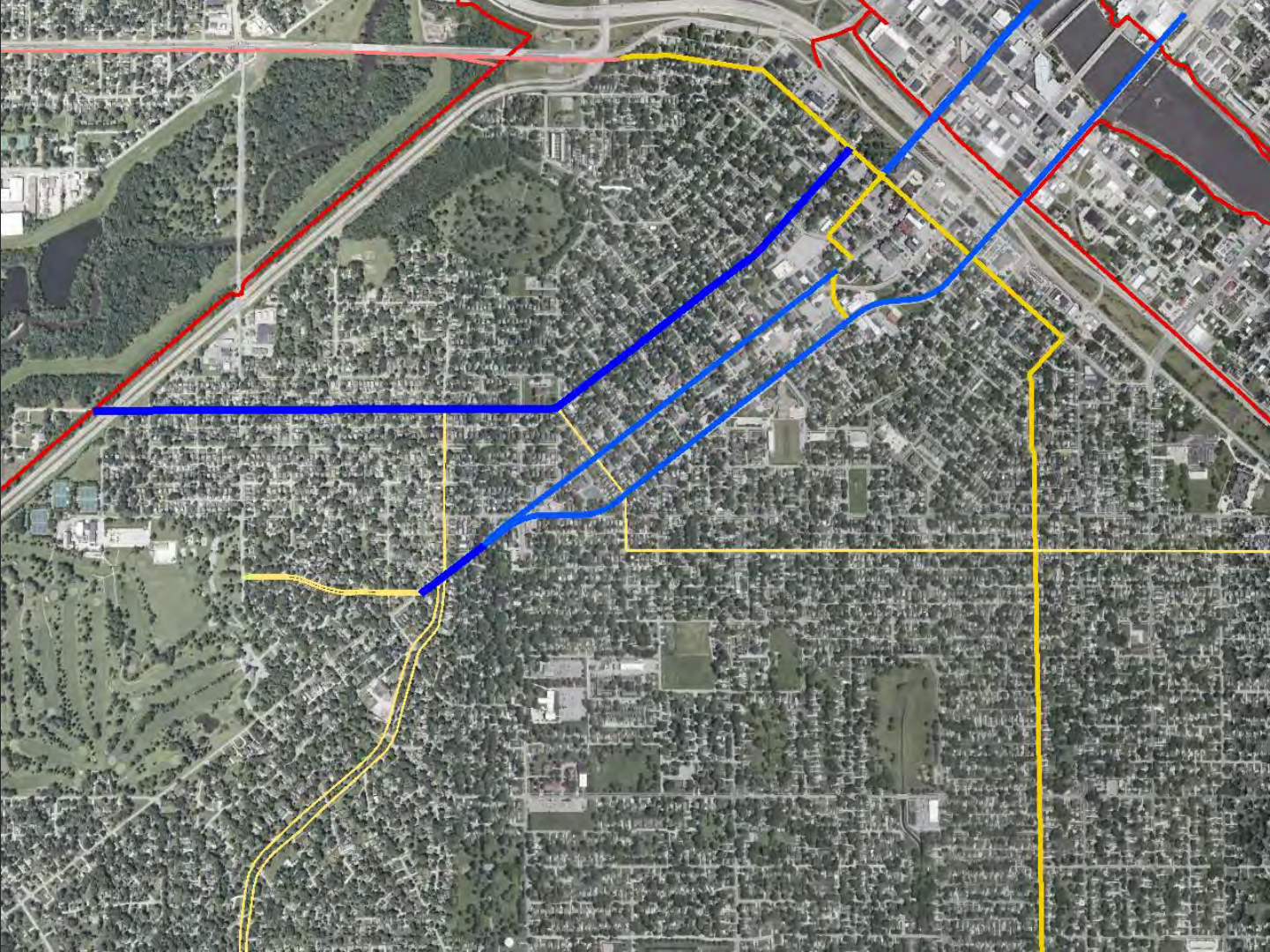


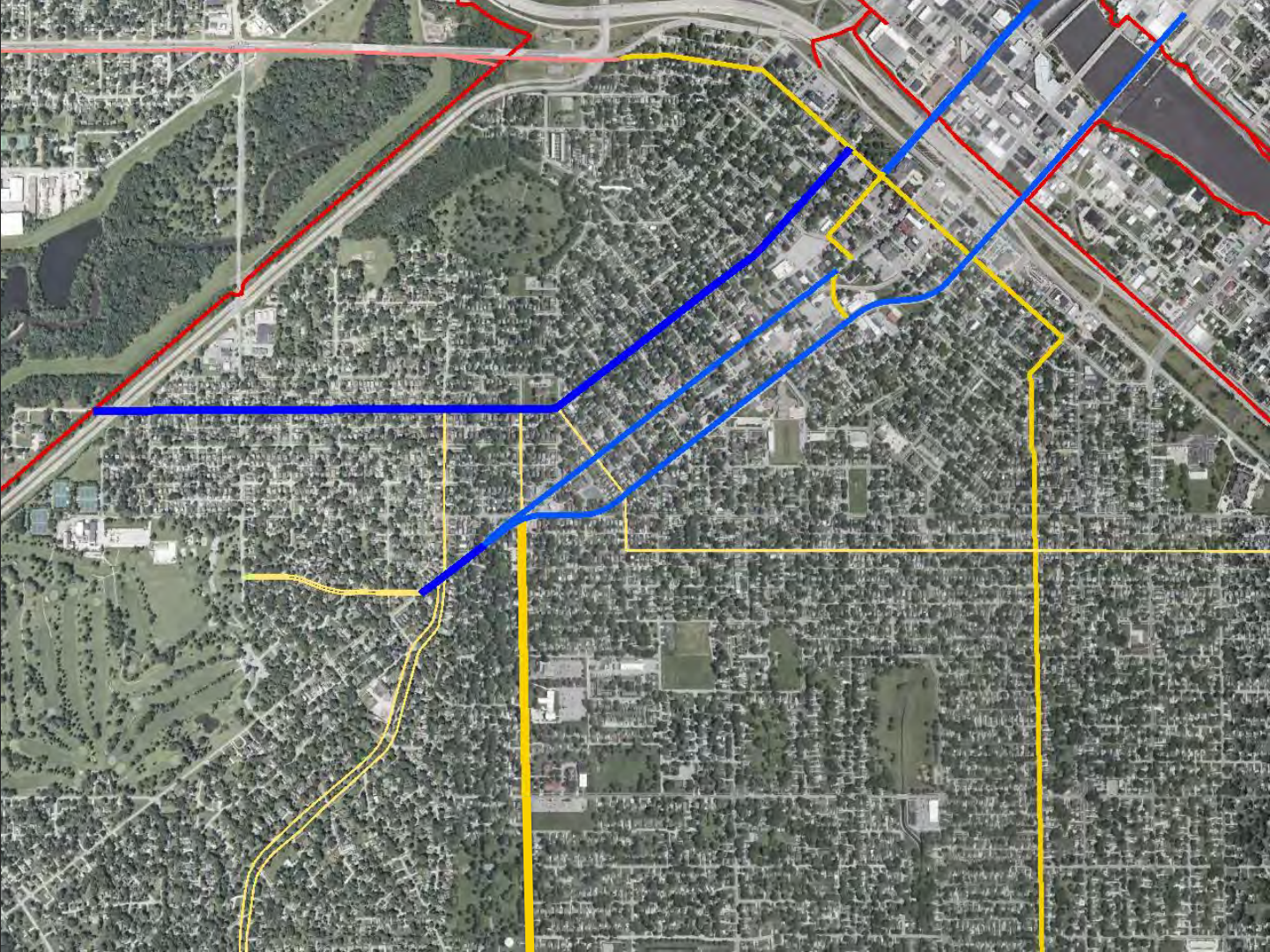


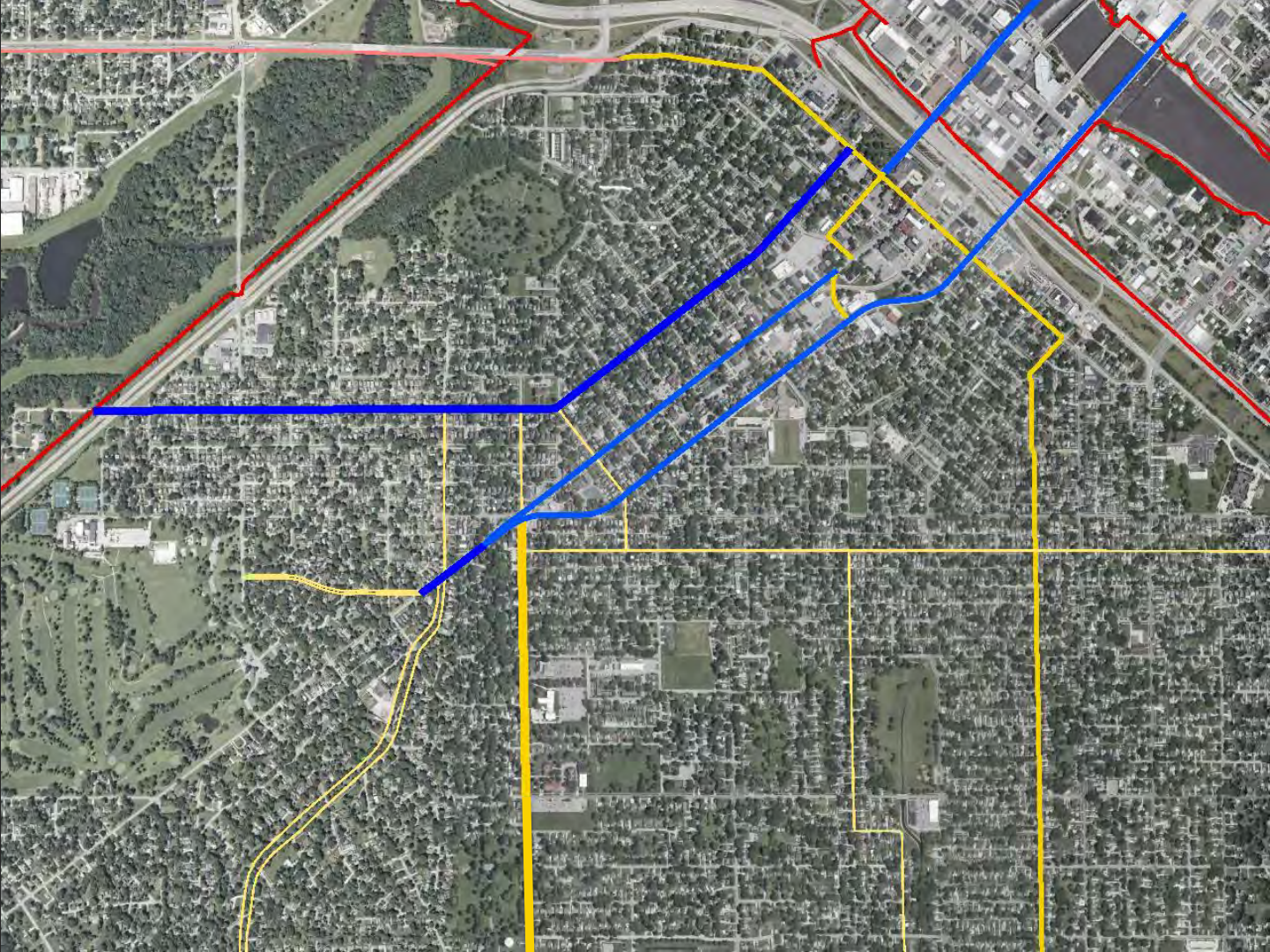












Building a bikeway network

- 5.) Approach it like it will all be built
 - Allows you to look at routes that use different segments of different roads

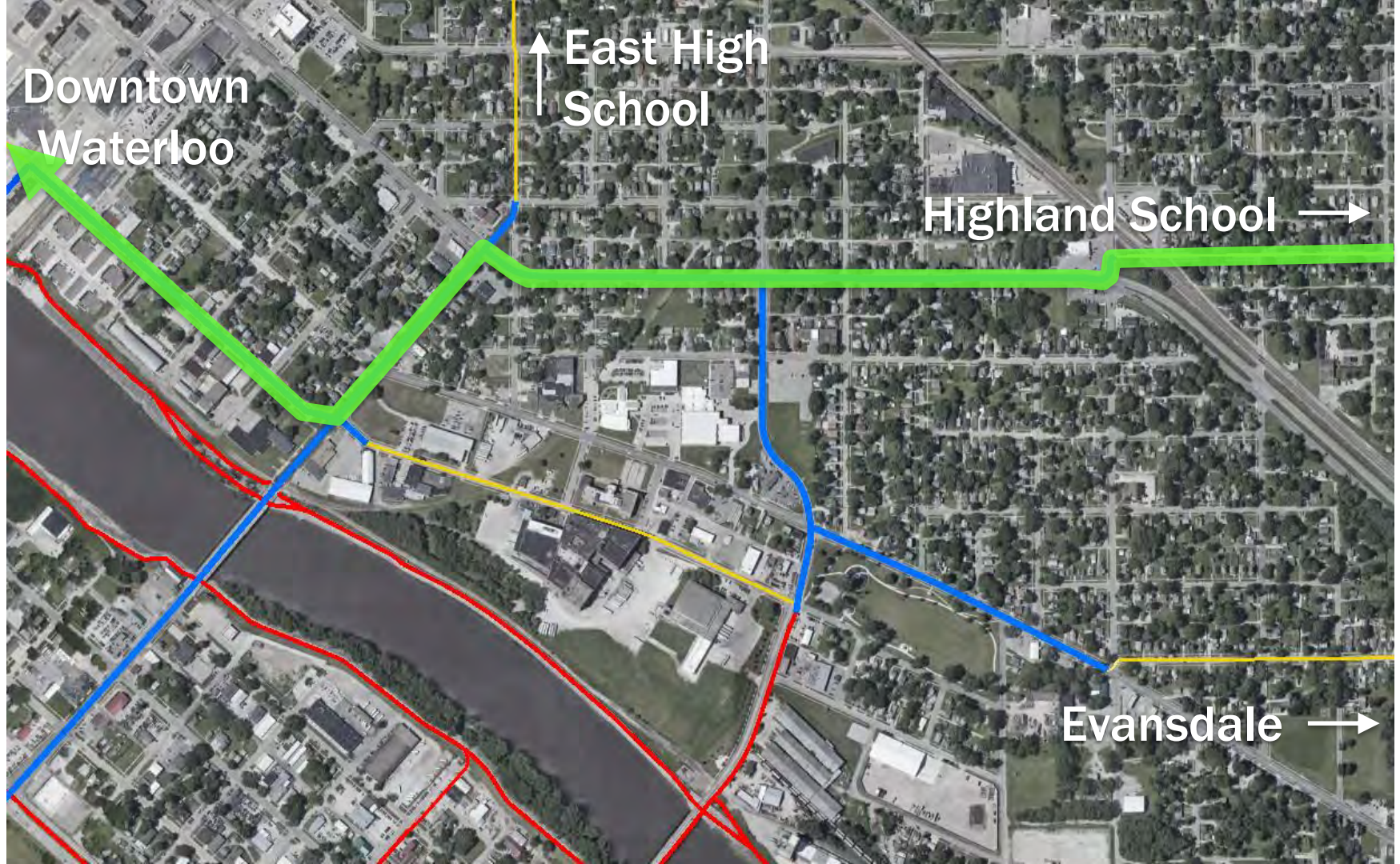


Downtown
Waterloo

↑ East High
School

Highland School →

Evansdale →





Downtown
Waterloo

East High
School

Highland School →

Evansdale →



Downtown
Waterloo

↑ East High
School

Highland School →

Evansdale →

Building a bikeway network

- Don't worry about consistency



INRCOG
Iowa Northland Regional
Council of Governments

Building a bikeway network

- Be prepared to explain improvements
 - Short segments are part of unified vision, not piecemeal



Building a bikeway network

- Don't be afraid to put plan into action



INRCOG
Iowa Northland Regional
Council of Governments



INRCOG

Iowa Northland Regional
Council of Governments

Redesigning an MPO Bikeway Plan

Codie Leseman, Transportation Planner

INRCOG | PARTNERS FOR PROGRESS

Developing Strong Local Government through Regional Cooperation

229 E Park Avenue | Waterloo Iowa 50703 | P (319) 235-0311 | F (319) 235-2891 | www.inrcog.org